



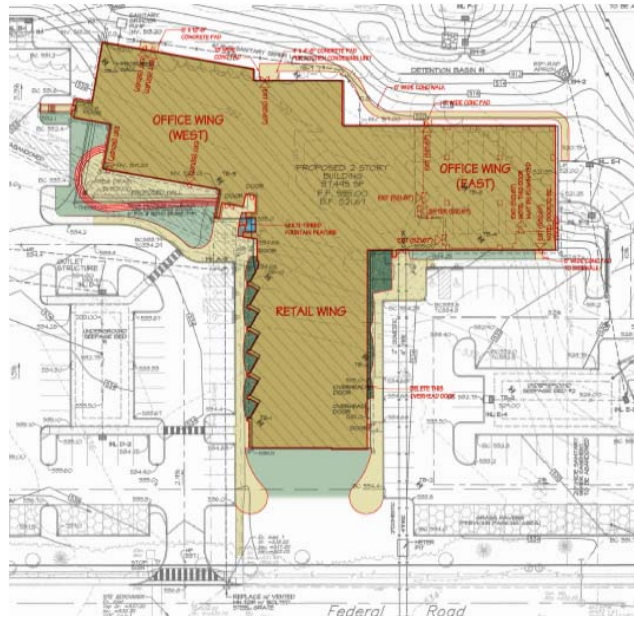
## DANSKO BUSINESS FACILITY

Gilmore & Associates, Inc. is working with Cabot-Kjellerup Realty Trust to develop a retail, office & warehouse facility comprised of approximately 50,000 square feet with 188 parking spaces on a 5.5-acre tract. The Penn Business Park is located in the C-2 Special Limited Business Zoning District. Access for the new facility will be via Commerce Boulevard. Public water and sanitary sewer will be provided to the facility from extensions of existing utilities in or adjacent to Old Baltimore Pike. With approved land development plans of the site Cabot-Kjellerup decided to change the building and site design and seek LEED certification. This resulted in incorporation of a green roof for a portion of the buildings stormwater bioretention/ infiltration rainwater harvesting and use of permeable paving in the parking lot. The result is a site and building design that reduces environmental impacts, uses less energy, enhances marketability, and increases user sense of well-being.

**LOCATION:**  
Penn Township,  
Chester County

**COMPLETION DATE:**  
On-going

**PROJECT COST:**  
n/a



### CONTACT INFORMATION:

Peter Kjellerup  
Cabot-Kjellerup Realty Trust  
8 Federal Road  
West Grove, PA 19390  
1-800-326-7564

### G&A CONTACT INFORMATION:

Melanie R. Hesse, RLA  
Landscape Architect  
mhese@gilmore-assoc.com  
610-444-9006

### SERVICES PROVIDED BY GILMORE & ASSOCIATES, INC.:

- Site Planning
- Stormwater Management
- Surveying
- LEED Consulting

**GILMORE &  
ASSOCIATES, INC.**

ENGINEERING &  
CONSULTING SERVICES

[www.gilmore-assoc.com](http://www.gilmore-assoc.com)